

FEBRUARY  
1987

PORSCHE  
**ÜBER**



**ALLES**

**WMR 1987 OFFICERS**  
**Western Michigan Region**

<b>PRESIDENT</b> <b>Eric Zillmer</b> 616/363-3740	<b>SECRETARY</b> <b>Doug Tepper</b> 616/956-9446
<b>VICE PRESIDENTS</b> <b>Phil Cull</b> 616/452-0781 <b>Bob Dankert</b> 616/624-1597	<b>MEMBERSHIP</b> <b>Frank &amp; Peggy Wagner</b> 616/676-1529 <b>IROC REP</b> <b>Richard Riley</b>
<b>TREASURER</b> <b>Judy Cull</b> 616/452-0781	<b>EDITOR UBER ALLES</b> <b>Lori Schutz-Riley</b> 616/458-9932

PORSCHE UBER ALLES is the official publication of the Western Michigan Region, Porsche Club of America, Inc., a non-profit organization registered in the state of Michigan and issued monthly. Statements and opinions appearing herein are those of the author and do not necessarily represent the official position of WMR-PCA, PCA, its officers or members. The editors reserve the right to edit all material for publication and to publish only that material which is felt to be in the best interest of the region and PCA. Permission is granted for chartered PCA Regions to reprint articles, providing credit is given to the AUTHOR, WMR'S PORSCHE UBER ALLES, and provided copyright is not involved. A return of your newsletter is requested.

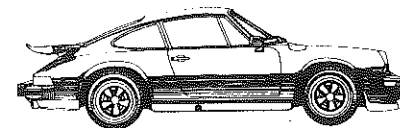
One year subscription price is \$10.00. All correspondence, contributions should be sent to office of publication, c/o Lori Schutz-Riley, 166 Plymouth N.E., Grand Rapids, MI 49503.

**Advertising Rates Per Year (12 Issues)**

¼ Page - \$ 75	Full Page - \$175
½ Page - \$125	Back Cover - \$250

All material must be submitted by the 12th of the month for publication in next issue.

**INSIDE;**



**STANDARD EQUIPMENT**

Carrera Commentary.....	1
P.D.Q.....	7
Minutes.....	24
Klassified.....	25
Porschemporium.....	27
Calendar.....	28

**OPTIONAL**

Porsche in the News.....	4
Geometric Alignment.....	11
TLC of your Porsche.....	16
Tire Maintenance.....	19



**meeting place—**

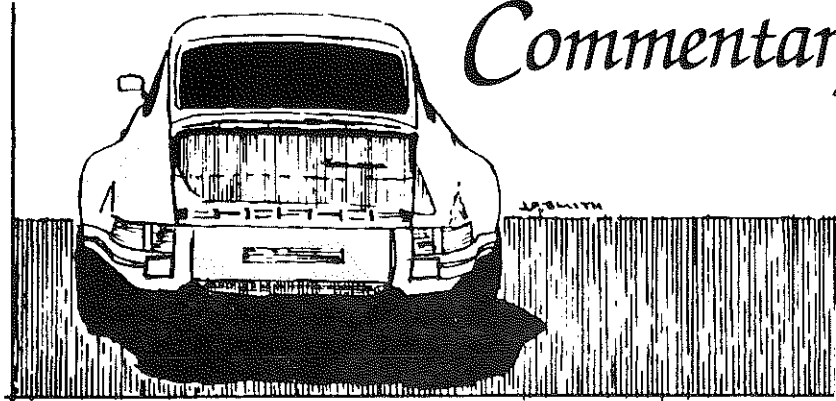
February 4, 1987	March 4, 1987
Eric & Debbie Zillmer	Frank & Peggy Wagner
2422 Russit NE	6501 Scarborough
Grand Rapids MI	Ada MI
616/ 363-3740	616/ 676-1529

Western Michigan Porsche Club holds monthly meetings on the first Wednesday of every month. The location changes each month to a different member's home. This location is found above. These meetings are open to all members of the club, and to anyone interested in becoming a member. Please feel free to contact an officer, or the host of the next meeting for more information or directions. See you there!

**ON THE COVER:**

Porsche "Moon Run '87" Blasts off from Cape Kennedy on Schedule - Technical support and maintenance from Contemporary Cars, INC., Porsche Dealership in Maitland Florida under direction of Rick Hurst. (305-645-4222). See article this issue!!!

*Carrera*  
*Commentary*



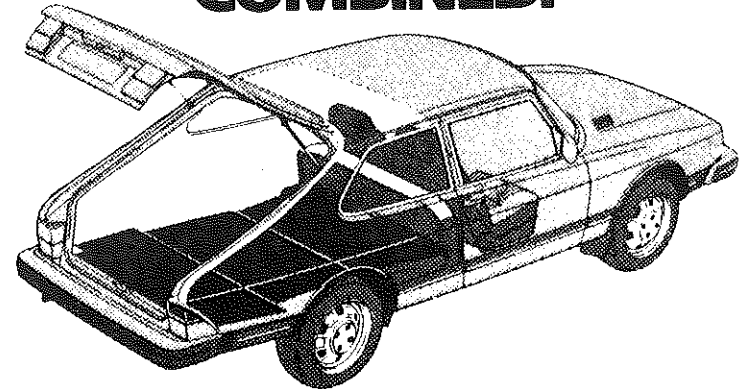
Are you getting ready for the 1987 Porsche Club season? Your board is. They had a meeting to set our calendar of events for the year. On the inside back cover is a listing of some tentative (and firm) dates of events so far. Highlights include IROC events, Holiday On Wheels, and A Tech Session.

Tentative date for the Tech Session is April 11. This may change, as we have not finalized our guest speaker agenda as yet. The day will begin about 11 am - to allow our out-of-town friends the opportunity to participate comfortably. We will have a scheduled lunch break, another fine ladies program, and a meeting place for dinner. We hope to have a great day - see the March issue and flyer for final details. Hope to see all of you there. For more information contact Rick and Lori Riley.

The IMSA racing season gets underway with the 24 Hour of Daytona race on 31 January. Trackside Targa will be there to bring you all the news.

Editor Uber Alles  
**Lori Schutz-Riley**

**SAAB HAS MORE CARGO SPACE  
THAN BMW, AUDI, AND VOLVO.  
COMBINED.**



Four of Europe's most desirable sports sedans have the following amounts of cargo space: Saab 3-door, 56.5 cubic feet; Audi 5000, 16.0 cubic feet; Volvo GLT Turbo, 13.9 cubic feet; BMW 733i, 22.5 cubic feet.

As you can see, Saab has more cargo space than all three of the others. As you can imagine, Saab is a lot more useful than any of the others when you pack up the summer house, provision your boat, load up sporting gear for a long weekend, or make an impulsive purchase at a tag sale.

Of course, only the Saab has a rear seat that folds down, so the others may claim that it has an unfair advantage.

That's right. It does have.

**SAAB**

*The most intelligent car ever built.*

**KEENAN CAR CO.**

**SAAB** *The Professional's Car*

3340 S. Division, Grand Rapids  
Ph. 616-241-5623

## P O R S C H E

## in the NEWS

In December of 1986, David Tepper, 4 year old son of Doug and Marcie Tepper of Grand Rapids, found that David has leukemia. We, as a group, would like to extend our heart felt sympathy to the Tepper family through the words of this poem -

May borrowed strength surround you  
Tender thoughts keep you warm,  
May a tiny ray of sunshine find it's  
Way into your heart  
each day.



On behalf of Porsche Friends of WMR,  
Written by Chuck and Lynne Olenyk

January 9, 1987

Reno, NV -- World renowned endurance driver Gerhard Plattner will "launch" a record setting 250,000 mile endurance drive from Florida this Thursday (January 15) simulating a trip from the earth to the moon in Porsche's new 944S.

Plattner will be gathering endurance and performance data on the new Porsche 944S 16-valve, twin-cam engine. The grueling 24-hour per day Porsche "Moon Run '87" will take Plattner to three continents during the next seven months to complete the car's 250,000 mile odyssey.

The drive's 70,000 mile North American first leg will be symbolically "launched" at "Spaceport USA" museum at the Kennedy Space Center in Orlando. The drive will take Plattner around the Gulf Coast, to the Temple of the Moon in Mexico City, back through the southern United States, up the eastern seaboard to Montreal, Canada.

Plattner, who drove a Porsche 944 Turbo around the world in 1986 to demonstrate the engine's open road dependability when equipped with a catalytic converter, will be joined for the initial Florida-Texas run by race driver Price Cobb of Dallas, Tex. Cobb was the 1986 winner of the "Porsche Cup North America" awarded to North America's premier Porsche race driver. Cobb is one of the favorites in this year's Daytona 24-hour endurance race, January 30 - February 1.

Plattner said the quarter million mile drive is an unusual method of gathering the type of technical data that helps Porsche produce some of the world's benchmark high performance automobiles.

"Porsche wanted to take the 944 16-valve engine out of the laboratory and put it into an extremely high stress, long term endurance testing protocol," Plattner said. 4



# P O R S C H E

Plattner added the quarter million mile "Moon Run" is a variation on the long standing Porsche racing program that tests the chassis and engines against the world's most demanding race courses. Long the dominant marque in endurance races and rallies around the world, the Porsche racing heritage began with a first start-first victory at Innsbruck, Austria in 1948.

The 944S utilizes the 944 chassis and basic engine block with a 16-valve head and double overhead cam shafts that increase the base 944 engine horsepower from 147 hp to 188 hp (SAE NET).

Submitted by Media Consultants - for more information contact Brain Lawson in Reno NV 702-322-7011

# U B E R A L L E S

## NAME TAGS



**BOB  
MASTERS**

**PORSCHE CLUB OF AMERICA  
WESTERN MICHIGAN REGION**

NAME ON TAG

**\$5.00 each**

MAIL MY TAG TO

Name \_\_\_\_\_

Address \_\_\_\_\_

TO BE PICKED UP AT H.O.W. \_\_\_\_\_

SEND ORDER TO:

Bob Masters  
1515 Berkshire SE  
Grand Rapids MI 49507



Specializing in the maintenance of:

Porsche • Audi • VW • BMW • Mercedes



*Dan*

**GERMAN  
AUTO  
SERVICE  
LTD.**



*Dan*

visit the *Deutschop*

Tires  
Parts  
Accessories

430 Bridge NW  
Grand Rapids  
(616) 454-3289

## Porsche Directed Quotations

Porsche Directed Quotations is a column which features interesting information about Porsche in the news. Material is submitted by members. If you come across a funny story, or quote, please send a copy to me, and share with fellow Porsche-nuts.

This month PDQ is brought to you by the founder, former editor Chuck Olenyk. Chuck presented me with a folder full of goodies to share with all of you.

From Autoweek

We've all been burned by a car ad or two, so I've taken the liberty of translating some common autospeak into language we all can understand.

EXTERIOR RESTORED - My brother-in-law, Louie, sprayed it metallic.

MECHANICALLY RESTORED - He did a valve job too.

ONE-OFF BODY STYLE - Don't bring a bondo detector.

INTERESTING HISTORY - Formerly owned by Johnny Rotten.

SOME RUST - You can put your foot through it anywhere.

NEVER RACED - God knows, I tried.

FRAME - OFF RESTORATION - You can't afford this car.

AS IS - It's got a terminal problem, see if you can find it.

LOST INTEREST - I can't find it.

MECHANICALLY PERFECT - Find another body.

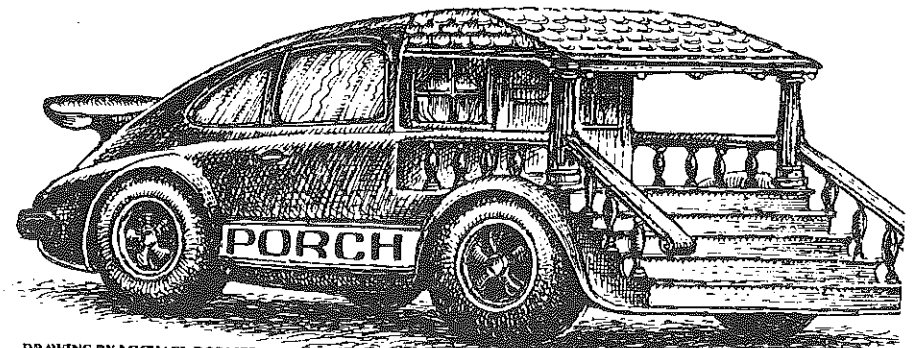
PROFESSIONALLY FEDERALIZED - Don't touch that bumper

Who would you turn to for multi-valve heads? If your name is Chevrolet, the hot rumor around Motown is that your'e talking to Porsche. Could this be the solution to the NASCAR Thunderbirds??

Also from Car and Driver -

Let us pray...

Our Ferry, who art in Zuffenhausen,  
hallowed by thy cars. Thy kingdom come,  
thy will be done, on street as it is on racetrack.  
Give us this day our 50-series tread, and forgive  
us our right-lane passes, as we forgive those few  
who surpass against us. And elad us not into Tempos,  
and deliver us from Eagles. For thine is the kingdom,  
and the horsepower, and the glory, for ever. Amen.



DRAWING BY MICHAEL DORMER

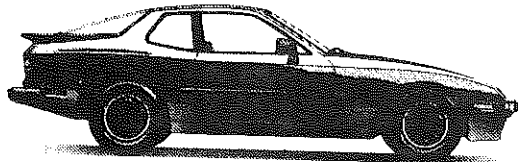
Bard on Board - from Car and Driver

Porsche, Porsche, burning bright  
SPinning its tires into the night  
Put it in gear and hit the gas  
And tell the world to kiss your a.....

Tim the Barbarian  
Daisy Hill Yuppie Farm in Vail CO

Some at-the-track humor from 1986 -

ON TRACK - Lowenbrau has a very effective commercial which it runs in advance of appearances of AL Holbert's Lowenbrau Porsche 962. IT shows scenes of Holbert driving at Watkins Glen interspersed with shots of AL walking the track to study the course. The dramatic footage came from 23 hours shot last fall by Backer and Spielvogel ad agency in New York. Part of the footage will be used in a future 30-minute TV show. Some of the footage was shot by a camera-man on a motorcycle running alongside the Porsche!!



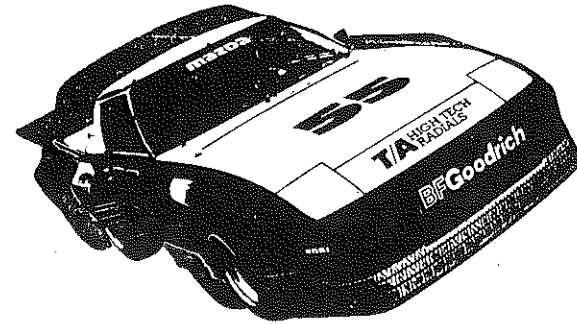
ON TRACK

Riggins also has a good sense of humor. After the crash, water was leaking from the rear of his car and another driver asked what it was. Riggins explained that water is a product of combustion, and his car has a system for recovering the water from the exhaust and pumping it into the fuel cell outside the fuel bladder. Thus he can start below minimum weight and the accumulated water, which outweighs the fuel consumed, will bring him up to minimum weight. He said it all with a straight face.

Meet a lunatic affair during which we tell rude stories about British cars and make up new Lucas electric jokes. (the motto of the Lucas Electric Works: "A good day's work, and 'ome before dark!") It's a three day event, with people trickling in over the course of the weekend; we're talking about British cars, after all, and if everybody showed up on time, well, it wouldn't be right don'tcha see it.

**T/A HIGH TECH RADIALS**

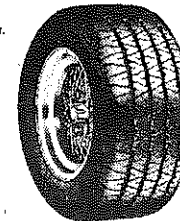
**BFGoodrich**



**Comp T/A®**

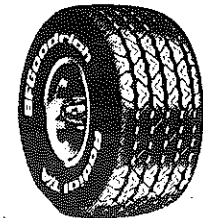
Developed to Deliver the Ultimate in Performance

- Precise, predictable handling—ultra-quick steering response.
- The only "V" speed rated radial tire produced in North America.
- The only street radial ever to beat pure racing tires at Le Mans.



**Radial T/A®**

Take A Highly Technical Approach To Driving. An Impressive Combination Of Technical Expertise And Advanced Design.



ASK ABOUT OUR DISCOUNT TO WMR/PCAer's

Advantage T/A

Radial T/A 70/60

**BFG T/A Headquarters**

Comp T/A

Mark T/A

**RONDA**

Your Complete Tire Dealer

130 MARKET SW 456-5321



P O R S C H E

## GEOMETRIC ALIGNMENT

For years cars have been aligned by using the Geometric Centerline method. The Geometric Centerline is a line through the midpoint between the front wheels which extends through the midpoint between the rear wheels.

Because of the availability of new computer controlled alignment machines it is now possible to align cars by also considering the thrust line of the car. That is to say, the actual direction the car travels when being driven in a straight line. A good example of a car's thrust line problem is a car which appears to be going sideways or 'dogwalking', when being followed.

When using the Geometric Centerline method, toe on each front wheel is adjusted using the cars Geometric Centerline as a reference. A satisfactory alignment can be achieved only if the rear wheels are exactly square with the Geometric Centerline. However, if the rear wheels are not square, they will create a thrust line which is not the same as the centerline. This results in the front end geometry being off center when the car is driven which leads to excessive tire wear and poor handling.

Because your Porsche has an adjustable rear axle, it is possible to do a total four-wheel alignment if using the latest computer equipment.

On a Porsche, the individual rear toe is adjusted to bring the thrust line of the rear wheels into coincidence with the cars Geometric Centerline. The front wheels are then aligned to the identical Geometric Centerline/Thrust line. Total four-wheel alignment results in all four wheels being parallel, and the steering geometry being centered as the car is in motion in a straight line.

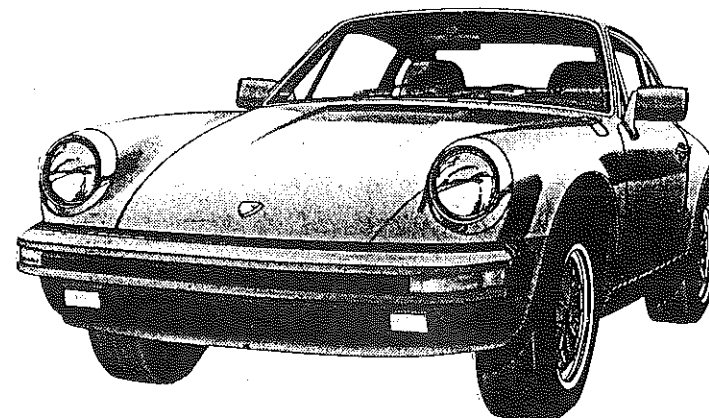
When having your Porsche aligned, be sure the people doing the work have state of the art equipment. This equipment has only been available for the past four or five years.

Reprinted from CIRCULAR, Central Indiana Region PCA Newsletter  
By Jim Farmer/Giganti VW, Porsche & Audi

U B E R A L L E S



618 E. CROSSTOWN PARKWAY AT VINE ST • KALAMAZOO



**Come See & Test Drive All  
The Performance Models  
SALES & SERVICE  
• 388-5500 •**

PORSCHE • AUDI • VOLKSWAGEN • VOLVO

### SALES HOURS

Mon. & Wed. 8:30 am-8 pm  
Tues., Thurs., & Fri. —  
8:30 am-6:30 pm  
Sat. 10 am-3 pm

### SERVICE & PARTS HOURS

Mon. & Wed. 7:30 am-8 pm  
Tues., Thurs., & Fri. —  
7:30 am-5:30 pm



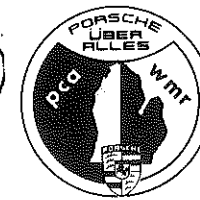


You are  
invited to

## Winterfest '87

February 14  
Silo Gopher, Marne MI  
Cocktails 6:30 pm  
Buffet 7:30  
Dance to follow  
Semi formal  
\$15.00 per person

RSVP by February 7 to Debbie Zillmer  
2422 Russit NE, Grand Rapids, MI 49505  
616 363-3740



## Winterfest '87

February 14  
Silo Gopher, Marne MI

Winterfest '87 will be extra special this year. It's on Valentine's Day, Saturday, February 14. Bring that special someone (or meet them there!) to meet with good friends and lots of fun. We'll be at the Silo Gopher in Marne, MI just west of Grand Rapids. Take I-96 toward Muskegon to the Marne exit, and follow signs in town. You can't miss it.

Cocktail hour is at 6:30 pm with punch bowls compliments of the Porsche Club. There will also be appetizers and a cash bar available. At 7:30 pm we help ourselves to a delicious three entree smorgasboard with all the extras and a very special dessert to top it off. So bring your appetite.

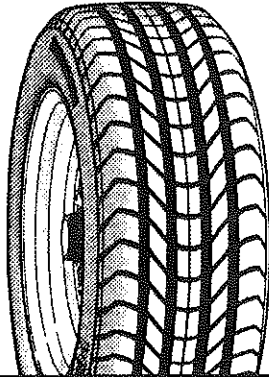
Dinner will be followed by a review of the past year, awards presentation and the announcement of new officers. Then grab your sweetie and join us on the dance floor. We'll have a popular DJ with a wide range of good music, so we can dance the night away. For those of you who prefer, there is a separate area by the bar for "bench racing" where you can talk and be heard!

So leave your Porsche and bring your Valentine for a super evening!! Of course, all single bachelors are also quite welcome!! (and bachelorettes)

Tickets will be \$15.00 per person, which includes dinner, and dancing. Call your reservations to Deb Zillmer at 616/363-3470 by February 7th, or write and send check or money order payable to WMR/PCA to Debbie at 2422 Russit NE Grand Rapids, MI 49505. Overnite reservations available in Grand Rapids at the Harley Hotel (616-949-8800) or the Red Roof Inn (616-942-0800). Call Debbie for additional information.

Looking Forward To Seeing You There On Valentine's Day!!!!

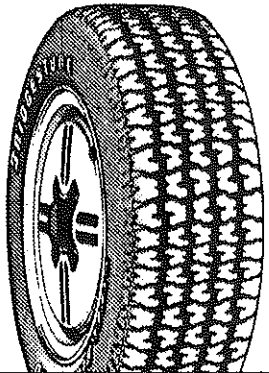
# For Pure Performance Buy Bridgestone



## Potenza RE71 Ultra High-Performance

- One of today's premier performance tires.
- Ultra high performance, V speed rating.
- Unidirectional tread pattern offers great performance on wet and dry surfaces.
- Race proven high speed construction.

SIZE	PRICE
SPECIAL DISCOUNT FOR PCA/WMR MEMBERS	



## SF-407 Steel S407 All-Season

- Exclusive SuperFiller bead construction.
- 70 series, H speed rating for domestic and imported cars.
- Two tough steel belts plus aggressive tread pattern for wet and dry road surfaces.
- Black, raised white letter or linewhite sidewalls.

SIZE	PRICE
CALL FOR PRICES	

# BRIDGESTONE

WHERE NEW IDEAS TAKE HOLD.

**TIRE CENTER 530-0051**

# TLC of your Porsche

By Jay Pineau  
from Ark-La Tex Region  
Reprinted from Roundup, Longhorn Region PCA  
July 1986

All Porsche Cars are equipped with constant velocity universal joints on the rear axles. These joints are quite expensive to replace, but with periodic lubrication they will last practically forever. Relubrication should be done every 25,000 miles if boots are not defective allowing abnormal grease loss. Even though the correct quantity of grease is still around the joint, it solidifies to a wax-like compound, which does not provide the proper lubricant film on the balls and complementary parts.

Relubrication consists of complete disassembly of each joint (don't mismatch the parts as they are selectively fitted at manufacturer), cleaning thoroughly and reassembly with a special molybdenum grease available for "U" joints. You will need a hexbit or 12 point spline socket, depending on your vehicle, a bucket of solvent and sufficient grease plus 3 or 4 hours to complete both axles. It's a dirty, messy job, but worth the effort as opposed to several hundred dollars for replacements plus the possibility of failure many miles away from your home base.

*Tune your*  
**Porsche**

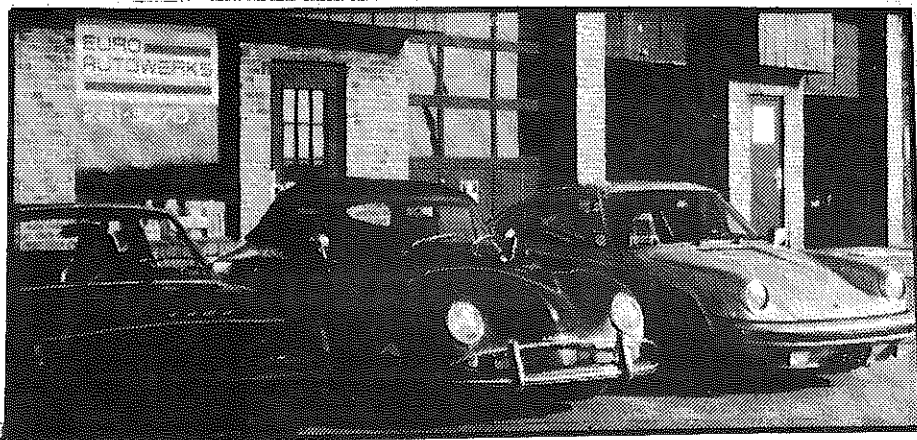
P O R S C H E

# ANNOUNCEMENT

West Michigan Region Shelby American Automobile Club

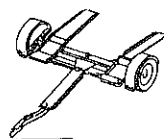
On Friday February 13, they are tentatively planning a tour of the Zakspeed facility in Livonia, MI. Zakspeed is the company that builds and maintains Ford's IMSA GTP Probe Cars. Cost for the tour is \$2.50 per person, money to be used for a gift for Zakspeed. If you are interested in going, call Jack Redeker for more information at 616/824-0600 days and 616/846-4136 evenings.

## EURO AUTOWERKS



4450 Stauffer SE  
Kentwood MI 45908

Off 44th, between  
Breton & Kalamazoo



U B E R A L L E S

## partsource® international

quality parts & accessories for Porsche®

Call us for the LOWEST prices on original equipment parts and selected accessories for your Porsche. We buy from the same manufacturers which supply the Porsche factory and pass the savings on to you! Whatever your needs, you can enjoy substantial savings on thousands of original parts.

We feature: A complete line of "Hard Parts" . . . Maintenance Items . . . Body Parts . . . Rubber seals and gaskets . . . Brakes . . . Suspension . . . Hydraulic Components and Rebuilding Kits . . . Aeroquip Brake Lines . . . Ferodo Pads . . . Repco Pads . . . Dustless "White" Brake Pads . . . Bell Helmets . . . Pyroprotect Racing Harnesses, Suits and Helmets . . . Wolf Bras and Car Covers . . . P21S Wheel Cleaner . . . Centerforce Clutches . . . Cartel 570° and Silicone Brake Fluid . . . Clymer Service Manuals . . . WX-2 Wiper Blades . . . Tools . . . Tire Gauges . . . Superlamb Sheepskins . . . THE Most Elegant Floor Mats on the Market (30 Colors!) and . . . much, much more!

**For price quotes, information  
or to place orders:**



**(312) 382-7911**



Monday-Friday 9 AM-9 PM • Saturday 9 AM-5 PM

Most orders shipped within 24 hours

425 mockingbird lane • barrington, illinois 60010

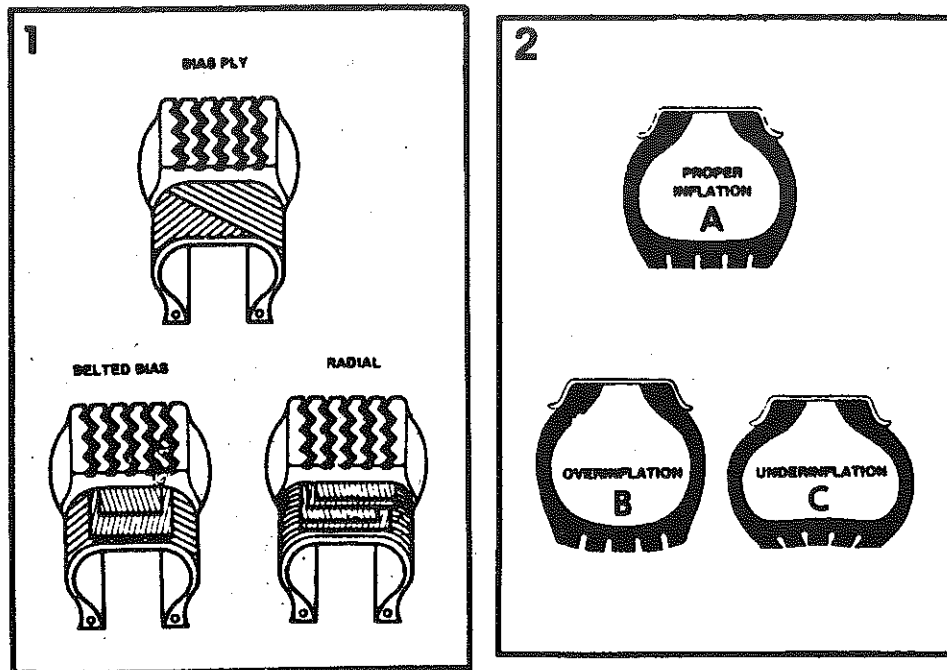
# Tire Care and Maintenance

Reprinted from Der Sportwagen, Kansas City PCA Newsletter Nov 1985, no author sited

## GENERAL

Good tire care is important to your driving safety and the extra tire life you receive saves you hard earned cash. This article tells you how to care for your tires so they will give you longer life and safer operation.

There are three types of tires: bias ply, belted bias and belted radial (Figure 1). Bias ply tires have been made for years and are considered a basic tire. Cords run at an angle with the tread. Bias belted tires have fiberglass or rayon belts encircling the tire over the bias plies and beneath the tread. Radial tires have plies running at a 90° angle to the tread, from bead to bead. Steel or fabric belts circle the tire beneath the tread and over the very flexible carcass plies. These tires are the most expensive but can give better traction, longer life and increased gas mileage. Make sure you have the correct size tires for your car as specified in your owner's manual.

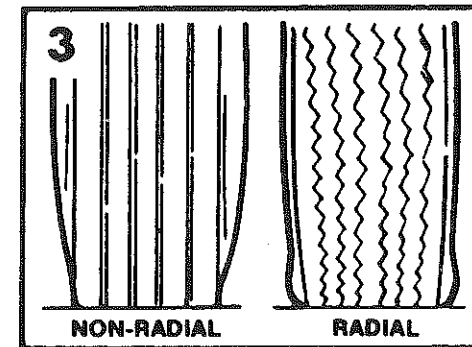


Regular tire maintenance will help you get the maximum life and safety from your tires. Perform specified maintenance at the following intervals:

1. Check tire pressure - every fuel stop or 2 weeks
2. Rotate tires - every 6 months or 6,000 miles
3. Check tread depth - every 6 months or 6,000 miles
4. Clean tread of stones, glass or debris - as necessary

## TIRE CARE

**PRESSURE** - One of the simplest and most often neglected acts of tire care is maintaining the proper tire pressure. Properly inflated tires ride flat on the road the way they were designed to do (Figure 2A). If overinflated (Figure 2B), the car rides on the center of the tire tread and rapid wear in that area occurs. Underinflated tires (Figure 2C) (by far the most common condition) wear the outside of the tread, reduce gas mileage, and run hotter, which causes more rapid wear, and are noisy in turns.

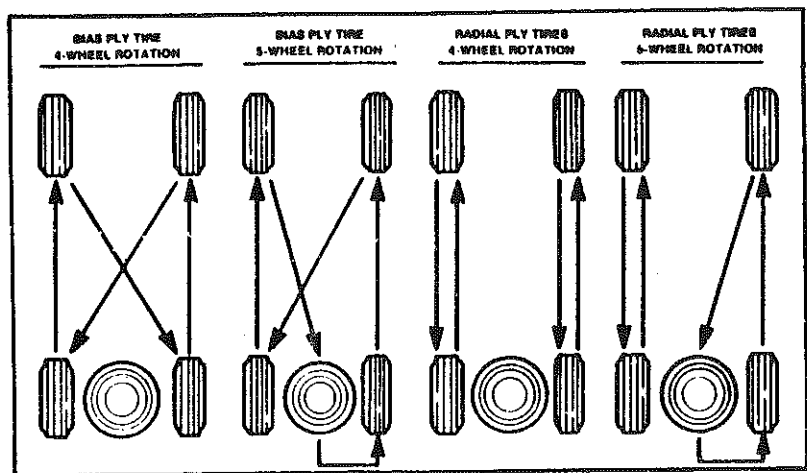


Uneven tire inflation can cause the car to pull to one side when braking. This can cause serious problems at a time when you least need them. Every car should have a tire pressure gauge and a tread depth gauge in the glove compartment. A gauge is the only way to check tire pressure accurately. And you can't rely on the gas station gauge. It's often missing or broken. Note that radial tires have a characteristic tire bulge (Figure 3) which makes them appear underinflated when compared with a standard tire. A gauge is the only way to tell when these (and other) tires have the proper inflation. Inflate tires equally to the recommended pressure on the label on your car door post,

glove compartment door or in your owner's manual. For long trips, increase tire pressure by 204 PSI, but never exceed the maximum pressure shown on the tire sidewall. Always check pressure when tires are cool, because pressure will increase when tires are hot from running. Do not forget to check the spare.

**ROTATION** - Tires wear differently on the front and rear of your car. Wear can be equalized, however, by rotating the tires every 6,000 miles.

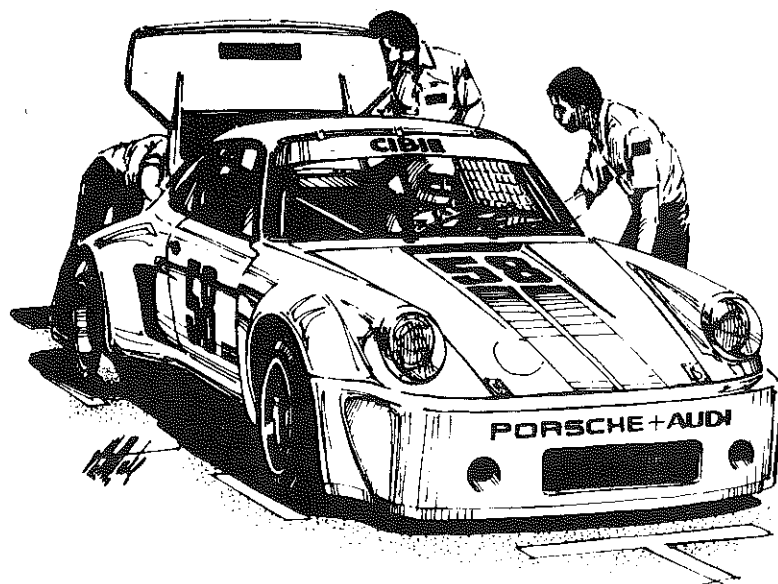
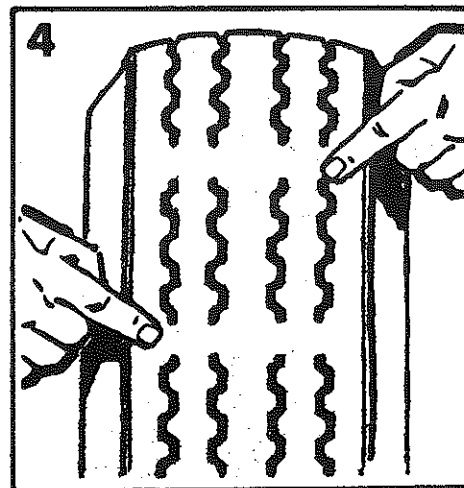
**DON'T** include space-saving or temporary-use tires in the rotation. Studded or regular snow tires should not be rotated, and radials should be kept on the same side of the car (maintain same direction of rotation) to avoid rough ride and vibration. Follow the patterns shown in Figure 4. Mark radial or studded snow tires so they can be replaced in the same position each time to maintain same direction of rotation.



**TREAD DEPTH** - Check the tread depth regularly and change tires when any two adjacent grooves are less than 2/32 inch deep, or the wear indicator bars show across the tread (Figure 5). A Lincoln head penny upside down in the groove should not show the top of Lincoln's head. If so, the grooves are less than 2/32 inch deep.

When checking depth, clean rocks or bits of debris from tire tread grooves.

**DRIVING HABITS** - Your driving affects your tire wear also. Avoid jack-rabbit starts, hard cornering, overloading your tires (the maximum load is on the sidewall) and severe stops for maximum tire life. And follow the maintenance schedule shown and you'll extend your tire life and save a few dollars in the process.





# Schnitzelbank Restaurant

Grand Rapids Superb German Restaurants, SINCE 1932

featuring . . .

Your Favorite Old Style  
GERMAN & AMERICAN  
FOODS!



Old World Charm & Atmosphere  
SERVING WINE - COCKTAILS - IMPORTED BEER

360 Seating  
Capacity

Banquet Facilities  
For 100

Serving From  
11:30 AM til 8:00 PM



CLOSED  
SUNDAYS  
AND HOLIDAYS  
AND FIRST  
3 WEEKS  
OF JULY



**459-9527**

342 Jefferson S.E. at Wealthy  
Ample Free Parking Downtown

WEALTHY	JEFFERSON	RESTAURANT
12	DIVISION	W

# MINUTES

January 7, 1987

Present: Pete Dykema, Phil & Judy Cull, Frank & Peggy Wagner, Bob & Soo Dankert, Eric Zillmer, Dick Burnham, Bob Shedd, Don Meyer, Chuck Olenyk, Hosts: Rick & Lori Riley

Minutes: Accepted as printed.

Treasurer: Peggy Wagner - current balance is \$7689.77. Balance at start of 1986 was \$8009.29. Ed note - we purchased timing equipment for \$1400.00 in 1986.

Membership: Frank Wagner - one new member. the region membership according to National PCA is 114.

Uber Alles: Lori Riley - planning a membership directory in March, event calendar soon, within budget for 1986.

IROC: Rick Riley- Rick will be our IROC rep this year. Get any comments or suggestions for the upcoming year to him in time for the March IROC meeting.

Emporium: A motion was made and passed to buy for stock one dozen polo shirts and one dozen long sleeved T-shirts for sale at Winterfest.

President's Report: Frank Wagner - David Tepper, 4 year old son of Doug and Marcie Tepper is ill with leukemia. A motion was made and passed to find a suitable way for the club to show it's support for the Teppers. The gavel was passed to this year's president - Eric Zillmer.

New Business:

Winterfest - Eric Zillmer - invitations to be sent  
Other - preliminary planning for trip to vintage car race has begun. Contact the Riley's for input.

# KLASSIFIED

Klassified is a listing of want/sell ads submitted by WMR members. Ads will be run for 2 consecutive issues at no charge. Other regional newsletters have similar columns, and are available from the editor on request. Minimal charge for ads for non-members.

FOR SALE

911 SC 1979. Targa, Moca Black, broan leather, lowered, Gatorbacks, limited slip, air, cruise, no winters, 70,000 miles. \$18,900 Call Steve Locke 616/247-0028 evenings.

FOR SALE

1976 Mercedes 450 SL Convertible, with both tops, automatic trans. power steering, power brakes, air conditioning, deluxe burglar alarm, leather seats, well-maintained, body excellent condition, engine excellent, dark metallic brown exterior, stored winters, complete maintainance records, 68,000 miles \$22,700 Call Steve Fidler 616/ 453-2014 evenings.

FOR SALE

911 Engines, both in long-block form; 2.0 T (from 1970 914-6) Fresh, Prof. rebuild with 500 mi. new chain tens. with safety locks, crank std./std., webbers with S jetting; stock distrib. \$1800/OBO. 2.0 liter (1970 914-6) excellent shape, compression has S pistons/cyl., S cams, S distrib., new chain tens. with locks and fresh valve adjustment. \$1800.  
356 type parts, including cranks, cases, transaxle parts, etc. 914-4 body parts; doors, eng. lids, glass, suspension, etc. modest prices! Tom Pixley, 881 Kelly, Traverse City MI 49684 Call 616/ 946-0724

FOR SALE

1984 944 WPOAA094OEN455397. Guards Red/black, leather sport seats, limited slip, sport suspension, Monterrey alarm, sunroof, 5 speed, cruise, Weltmeister suspension (22mm & 28mm Sways, 25mm Torsion, 210 lb. springs), lowered, Bursch header, Borla muffler, "wood" chromed w/red centers 7" & 8"x15's, throttle response kit, unbelievable autocross car. Beats 911's. No winters. Concours winner. 24,000 miles. Contact Jerry Fort-hofer, 57155 West Lake Drive, Middlebury, IN 46540, or call 219/825-9859.

# KLASSIFIED

FOR SALE

1970 914-6, Serial # 914043208 : white ext./black custom int.; 1.8 ltr RSR engine with only 3,000 miles; Weber carbs.; Airport gears; Koni shocks' sway bars; 7" 944 wheels; Yokohama tires. VERY FAST—does 110.5 mph in 12.84 secs. for a quarter mile. I will also sell with just the stock engine, or with both engines, or will sell the RSR engine alone. MAKE OFFER. Bill Carder, 512/494-6781 (W), 512/492-9931 (H).

FOR SALE

1970 914-6, White, roll bar, 7" mags, 2.4 S engine w/60,000 on it, headers, torsion bars, "S" brake front and rear, sway bar, Koni-Bilstien, short gears, front battery, streetable auto-cross special, sport muffler, concours condition, fast and beautiful. Must go to good home. \$13,000 or best offer. Contact Bert Pharis 216/782-1144 days or 216/793-9773 evenings.

FOR SALE

1973 914-4 2.0 liter, Robin blue, 57,000 miles, stored winters mags, appear group. \$5,500 or best offer, Call Brian Williams at 616/245-2741 evenings or 616/532-4071 days.

FOR SALE

356 Parts  
NOS luggage rack, 4 - 5½" drum brake wheels - zero offset, limited slip, ass't race tires, most engine parts and sheet metal.

Panoramas 1972 Feb, Mar. June, July, Aug. Oct, Nov, Dec.  
1973 Aug - \$2.00 each

Contact Bill Moses 616/457-2635-H / 616/457-4917-W

FOR SALE

1968 912 Coupe, 5 speed, 1750cc, Recent restoration, and engine rebuild, guards red, black int., carrera spoilers, 5 spoke alloys, much TLC, \$10,5000. Contact Charlie Pond evenings at 913-341-9879.

# PORSCHE — EMPORIUM

Binders for Panorama.....	\$10.50
Books - Porsche Owner's Companion .....	14.50
Up Fixin Der Porsche Vol III.....	12.00
Car Badge, PCA.....	15.00
Car Badge, WMR.....	2.50
Decal, PCA 2", Inside or outside.....	.70
Decal, PCA 3½", Inside or outside.....	1.70
Emblem, PCA, ½".....	2.20
Emblem, PCA, 1".....	2.70
Lapel Pin, PCA ½".....	2.70
Patch, PCA 4".....	3.70
Patch, PCA 3".....	2.20
Patch, PCA/WMR 4".....	3.70
Old T-shirt, WMR child (10-12) (14-16).....	3.50
Old T-shirt, WMR Adult 34-36.....	3.50
PCA/WMR Adult Polo Shirt (S) (M).....	15.00
Ties, Porsche crest, navy,red,brown.silver...	13.50

Contact; Porschemporium  
 Bob and Kyria Masters  
 1515 Berkshire SE  
 Grand Rapids MI 45907

616-243-0349

Add 2.00 for handling on mail-orders

## 1987 CALENDAR OF EVENTS

### February

14 Winterfest WMR

### March

7 Trivia Party MIR

### April

4&5 Car Display & Concours MIR

11 Tech Session & Ladies Day WMR

### May

3 Australian Pursuit MIR

Late One-day Grattan WMR

24 Driver's School MIR

### June

26-28 Vintage Car Race Tour WMR

28 Driver's School II MIR

### July

4-6 Holiday On Wheels WMR

12 IROC I Northwood MIR

19 PB Tweeks Swap Meet Indy

### August

Mid Picnic WMR

23 MIR Picnic MIR

### September

Mid WMR IROC II WMR

### October

11 Crocodile Race MIR



**WESTERN MICHIGAN REGION  
PORSCHE CLUB OF AMERICA**



RETURN TO:  
 UBER ALLES  
 c/o LORI SCHUTZ-RILEY  
 166 PLYMOUTH NE  
 GRAND RAPIDS MI 49503

**UBER ALLES**

**BULK RATE**  
 U.S. POSTAGE PAID  
 Grand Rapids, MI  
 PERMIT No. 490

Kurt Wirth  
 7413 Sheffield Dr SE  
 Ada, MI 49301

address correction requested

**It's back.**

A 3.3 liter, air-cooled, horizontally opposed, six cylinder, turbo-charged engine that can accelerate from 0 to 60 in about the time it takes to say "The fastest production Porsche ever made" twice.

Or 5.5 seconds, if you prefer raw numbers.



**The  
Car Barn**

3000 Broadmoor S.E.  
 Grand Rapids,  
 Michigan 49508  
 Phone 616-942-8040